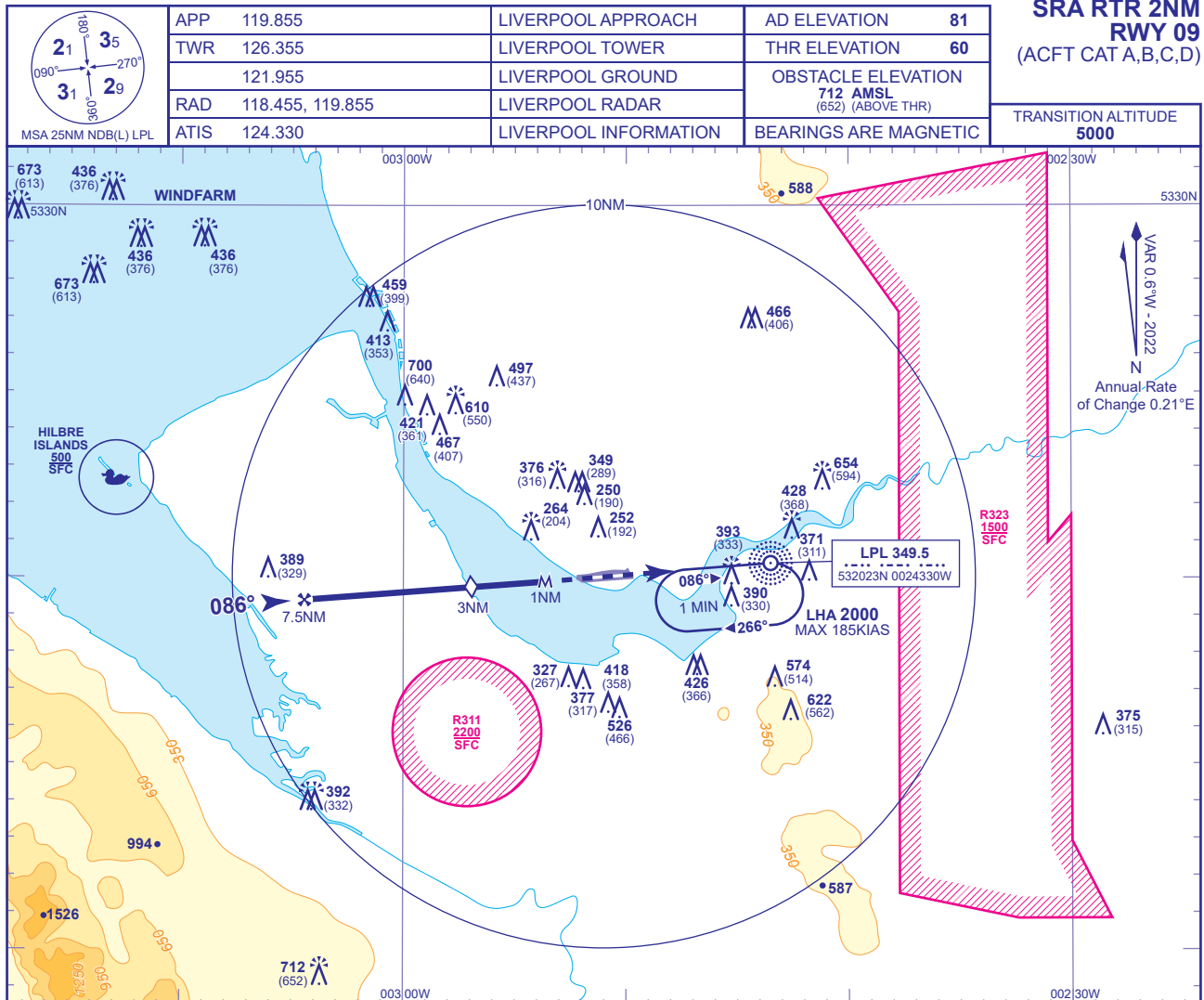


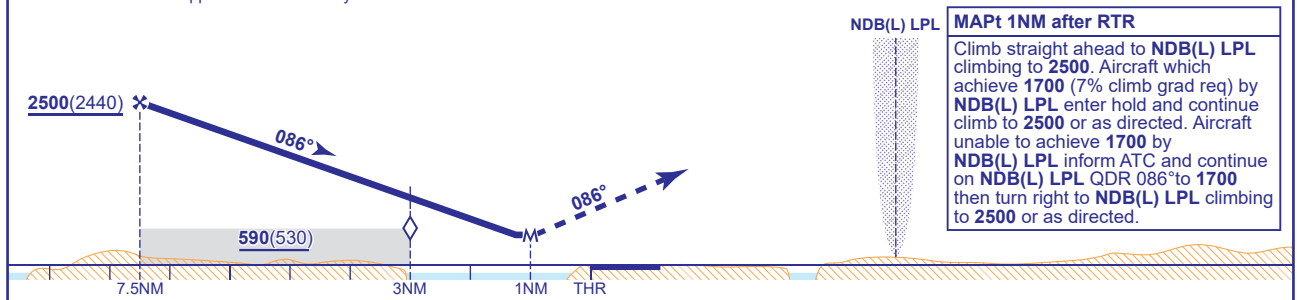
INSTRUMENT APPROACH CHART - ICAO

LIVERPOOL
SRA RTR 2NM
RWY 09
(ACFT CAT A,B,C,D)



RADAR ADVISORY HEIGHTS Gradient 5.24%, 318FT/NM						
NM	7.0	6.0	5.0	4.0	3.0 (SDF)	2.0
ALT(HGT)	2340(2280)	2020(1960)	1710(1650)	1390(1330)	1070(1010)	750(690)

Initial and intermediate approach as directed by radar.



Aircraft Category		A	B	C	D	Rate of descent	G/S KT	160	140	120	100	80
OCA (OCH)	Procedure	560(500)	560(500)	560(500)	560(500)		FT/MIN	850	740	640	530	420
VM(C)OCA (OCH AAL)	Total Area	550(469)	670(589)	930(849)	970(889)	RTR to MAPt	MIN:SEC	0:22	0:25	0:30	0:36	0:45

CHANGE (2/25): RESTRICTED AREA R323 ADDED.